

Register for our December activities in this issue of FUSE INK!

FUSE INK



December 1, 2015

Visit Our Website

Today is Giving Tuesday

We hope today you will take a moment to [watch this awesome new video](#) that shows just a glimpse of how FUSE impacts families every day.

You can make a huge impact on the lives of children with special needs just by [donating at this link](#).

Your act of kindness will mean so much to so many!

After you donate don't forget to share with your family and friends on Facebook and Twitter! Let them know why you are giving to FUSE on Giving Tuesday.

We appreciate your support!



Holiday Pitch In Dinners

In the month of December FUSE will have a holiday pitch-in at our regular monthly meetings in both Greenfield and Shelbyville. FUSE will provide fried chicken, and families will pitch in a side dish and/or a dessert. This is a family event, so no child care will be

provided at these meetings. Just plan to enjoy good food and good fellowship with your friends at FUSE!

December 7, 2015
Greenfield Intermediate School
Large Group Instruction Room
204 W Park St
Greenfield IN 46140
6:30 p.m.-8:30 p.m
[Register for the Greenfield meeting by clicking here](#)



In Greenfield after dinner the kids will watch a holiday movie while parents socialize.

December 14, 2015
Shelby County Public Library
Carnegie East Wing
57 W Broadway St.
Shelbyville, IN 46176
6:30 p.m.-8:30 p.m
[Register for the Shelbyville meeting by clicking here](#)

In Shelbyville after dinner we are expecting a visit from Santa, so be sure to have your children bring their Christmas lists!



Santa Claus is Coming to Town

Are your children making their list and checking it twice? If so, maybe they are gearing up for our visit with Santa.

Our favorite man in the red suit is going to visit FUSE on Saturday morning, December 12, from 9:30 am to 11:30 am. The Villas at Springhurst is hosting our event this year in their clubhouse in Greenfield. The Villas at Springhurst is located at 628 N Meridian Street. Use the entrance drive for the Legacy and Villas at Springhurst and follow it back to the Clubhouse. This event is open to any FUSE family, but for the convenience of our Shelby County families, we will also have Santa visiting at our regularly monthly meeting there in December.

Registration for this event is required and will be limited to the first 25 children, so [click here to register now!](#)

Siblings welcome! Registration will close by December 10 or when 25 children are registered, whichever comes first.

When you register you will be asked to select your arrival time to help us make sure the kids don't all arrive at once or get there too late to spend quality time with Santa. Santa also likes to have a few things to discuss with your child, so make sure you provide the requested info for his notebook to help save the elves some time for toy making!

We look forward to seeing our FUSE families and can't wait to hear about all those Christmas wish lists!

Villas at Springhurst
Clubhouse
628 N Meridian
Greenfield IN 46140
9:30-11:30 am



2016 Parent Support Meetings

FUSE is pleased to announce our 2016 schedule for parent meetings located in Hancock and Shelby County.



Join us at a monthly meeting to learn from speakers or from other families during our Q&A sessions. Let us help you find the resources and information to help you meet the needs of your child and family.

Greenfield meetings are held at Greenfield Intermediate School. Shelbyville meetings are held at the Shelby County Public Library. Meeting times are 6:30 to 8:30 pm. NEW THIS YEAR: Shelbyville meetings will be the 2nd TUESDAY of each month. Greenfield will remain on the 1st Monday.

2016 Support Meeting Schedule

Greenfield	Shelbyville
January 4	January 12
February 1	February 9
March 7	March 8
April 4	April 12
May 2	May 10

No meetings June or July

August 1	August 9
September 6	September 13

October 3 October 11
November 7 November 8
December 5 December 13

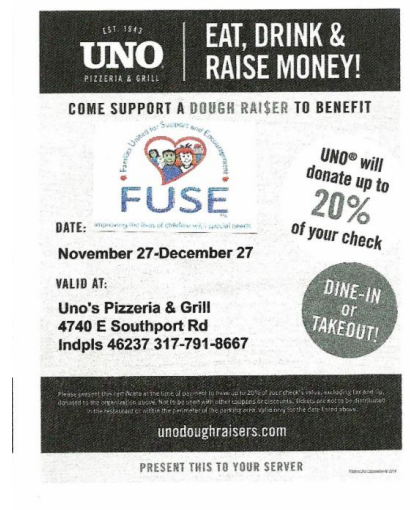
Meeting and childcare reservations can be made at www.fuseinc.org prior to each meeting.

Help FUSE Raise Some Dough at Uno's Pizzeria and Grill

While you are out doing your holiday shopping, take some time to eat, drink and relax at Uno's

Pizzeria & Grill in Southport! From November 27 to December 27, Uno's is helping FUSE raise some dough with a fundraising benefit. Just take in the attached Uno's flyer or mention that you would like to support the FUSE Dough Raiser when you pay your bill, and Uno's will donate 20% of your check to FUSE!! You can dine-in or carry out.

Uno's Pizzeria and Grill is located at 4740 E Southport Road in Indianapolis. THANKS FOR THE DOUGH UNO'S!



Community Integration and Habilitation Waiver Amendment (CIH Transform)

On January 4, 2016, the Indiana Family and Social Service Administration Division of Disability and Rehabilitative Services (DDRS) intends to submit a proposed amendment to the Community Integration and Habilitation (CIH) waiver to the Center for Medicare and Medicaid (CMS) for consideration.

DDRS has posted for public the CIH waiver second amendment to the DDRS Draft Policies for Public Comment webpage, along with a frequently asked questions document.

The amendment to the CIH waiver includes additional services, and clarifications to the existing services, covered under the waiver program. Due to some limitations in

the actual waiver amendment not all changes to services are reflected in that document. DDRS has posted a full set of the new service definitions on the CIH Transform webpage. Each new or updated service has a link to the service definition online. There is also a comprehensive list of all services in the Service Definition Matrix posted at CIH Transform. DDRS asked that stakeholders pay particular attention to training requirements as well as provider qualifications found within each service definition.

Comments will be accepted until 4:30 p.m. EST on Monday, December 28, 2015, and may be emailed to CIHW@fssa.in.gov or mailed to the address below.

CIH Amendment Public Comment c/o Division of Disability and Rehabilitative Services 402 W. Washington St., #W453 P.O. Box 7083, MS26 Indianapolis, IN 46207-7083

A list of the proposed modifications is [available here](#).

Don't Miss Out on Other Events Around the State--Follow Us On Social Media

We have received several announcements of other events around central Indiana but just don't have room to include all of them. We will be posting those on our Facebook page over the next few days so keep an eye out there! Follow us on Facebook or Twitter for those announcements and more! To make sure you don't miss any Facebook postings, it works best to click the setting to get notifications when we post. Otherwise all the posts will not always show in your news feed. There is a complicated algorithm Facebook uses to distribute posts, and we hear page fans from time to time say they aren't seeing our posts. If you need help adjusting your settings so you don't miss something important, just let us know and we'll talk you through it!

November Happenings

We had some great fun and learned new things at our various events in November! Hope you can join us at similar events next year!





Upcoming Events Calendar

- Nov 27 Uno's Greenwood Dough Raiser fundraiser (runs daily thru Dec 27, need flyer)
- Dec 2 McDonald's Night New Palestine 5-8 pm
- Dec 7 Family Pitch In Greenfield
- Dec 14 Family Pitch In Shelbyville
- Dec 12 Santa Event Greenfield 9:30-11:30 am
- Jan 4 Greenfield Parent Meeting
- Jan 12 Shelbyville Parent Meeting

Denise Arland | FUSE Inc. | 317-462-9064 | darland@fuseinc.org | www.fuseinc.org

STAY CONNECTED:

